

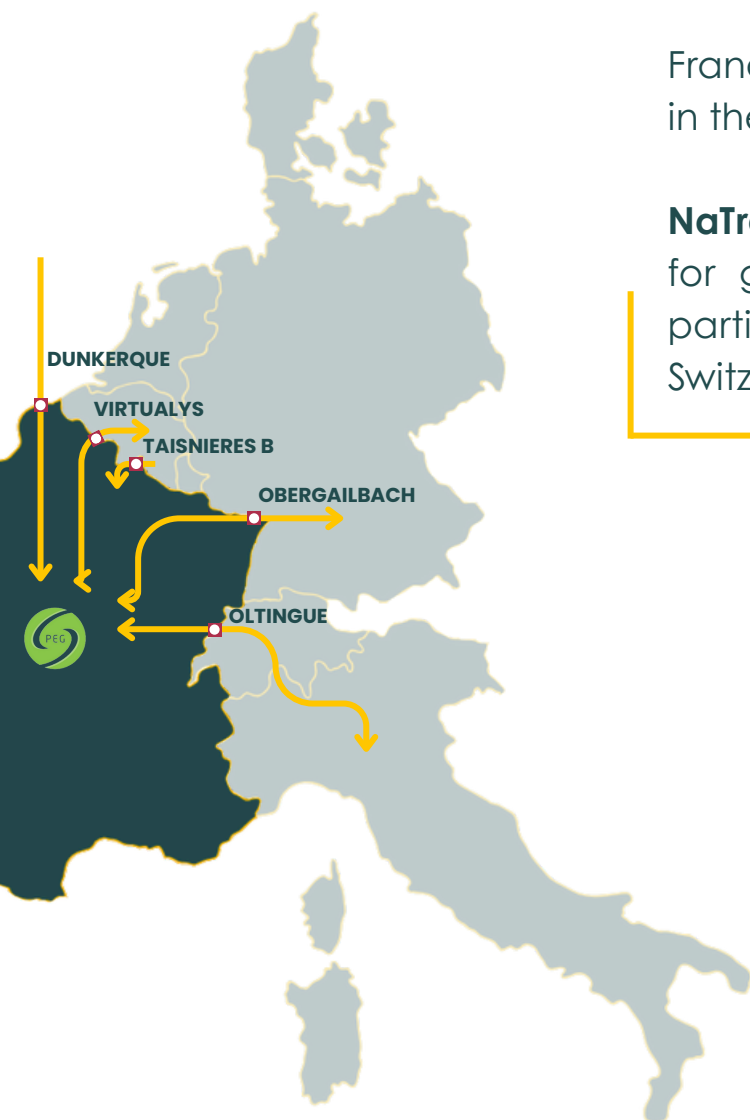


# 2025 naTran Yearly capacity auctions

for Interconnexions Point (IPs) on **PRISMA**.

**July 7, 2025 – Firm capacity**

**July 21, 2025 – Oltingue entry (*firm*) and interruptible capacity**



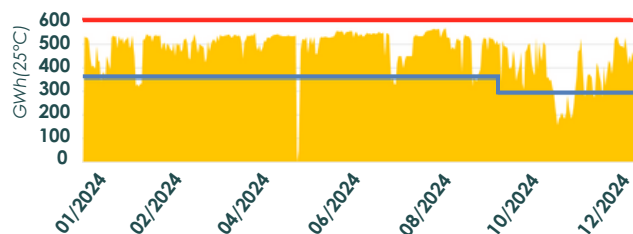
France holds a **strategic geographical position** in the European gas market.

**NaTran's network** serves as the **main entry point** for gas transit **towards north-western Europe**, particularly to Germany, Belgium, and Italy (via Switzerland).

## Available annual capacities for gas year 25 / 26 (GWh/d)

	Entry	Exit
Taisnières B	91	
Dunkerque	325	
Virtualys	342	0.5
Obergailbach	261	
Oltingue	90	27

### Dunkerque IP, **entry point** for the norwegian gas

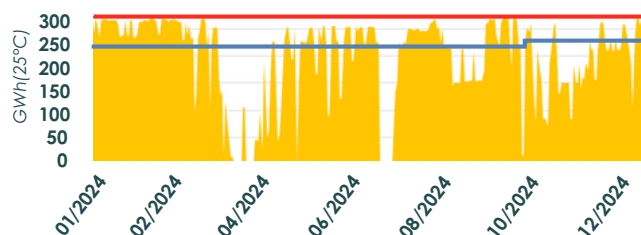


■ Allocations  
— Subscribed Capacity  
— Maximal technical capacity

Utilization rate  
in 2024

84 %

### Oltingue IP, **exit point** to Switzerland and Italy



■ Allocations  
— Subscribed Capacity  
— Maximal technical capacity

Utilization rate  
in 2024

81 %

For more information, please do not hesitate to [contact our sales team](#)